

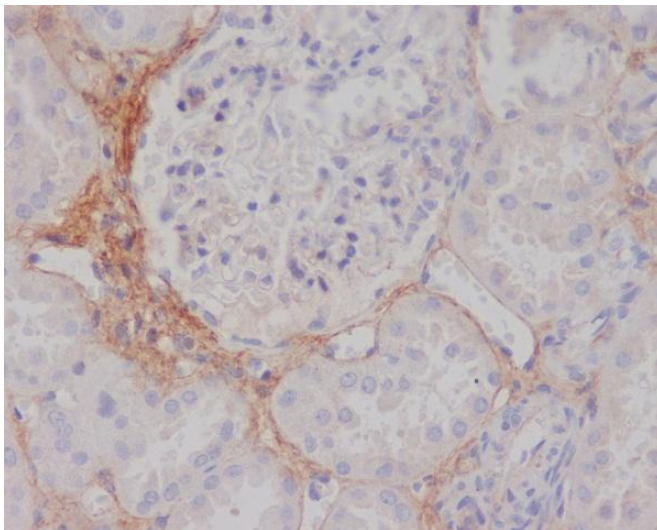
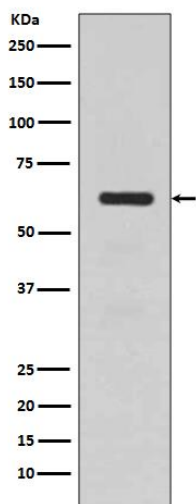


TGFBI Rabbit mAb

Catalog No	YP-Ab-17700
Isotype	IgG
Reactivity	Human,Mouse,Rat
Applications	WB,IHC-P
Gene Name	TGFBI
Alternative Names	Beta ig; Beta ig h3; Beta ig-h3; BGH3 HUMAN; Big h3; BIGH3; CDB1; CDG2; CDGG1; CSD; CSD1; CSD2; CSD3; EBMD; Kerato epithelin; Kerato-epithelin; LCD1
Research Field	Signal Transduction
Product Categories	Primary antibody
Host	Rabbit
Dilution Ratio	WB: 1/500-1/1000 IHC: 1/50-1/100
Molecular Weight	Calculated MW: 75 kDa; Observed MW: 68 kDa
Clonality	Monoclonal Antibody
Clonality No.	R01-1B9
Immunogen	A synthesized peptide derived from human TGFBI
Purification	Affinity Chromatography
Conjugation	Unconjugated
Modification	Unmodified
Form	Liquid
Buffer System	Rabbit IgG in phosphate buffered saline , pH 7.4, 150mM NaCl, 0.02% sodium azide and 50% glycerol.
Storage	Store at 4°C short term. Aliquot and store at -20°C long term. Avoid freeze/thaw cycles.
Background	TGFBI is a RGD-containing protein that binds to type I, II and IV collagens. The RGD motif is found in many extracellular matrix proteins modulating cell adhesion and serves as a ligand recognition sequence for several integrins. TGFBI plays a role in cell-collagen interactions and may be involved in endochondrial bone formation in cartilage. TGFBI is induced by transforming growth factor-beta and acts to inhibit cell adhesion.
matters needing attention	Avoid repeated freezing and thawing!
Usage suggestions	This product can be used in immunological reaction related experiments. For more information, please consult technical personnel.



Products Images



Mouse small intestine

